

Physics
Advanced
PAPER 3: General and Practical Principles in Physics

Monday 17 June 2024 – Morning

Time: 2 hours 30 minutes

Diagram Booklet

THIS DIAGRAM BOOKLET MUST BE RETURNED WITH THE QUESTION PAPER AT THE END OF THE EXAMINATION.

In the boxes below, write your name, centre number and candidate number.

Surname					
Other names					
Centre Number					
Candidate Number					

INSTRUCTIONS

There may be spare copies of some diagrams in case you need them.

CONTENTS

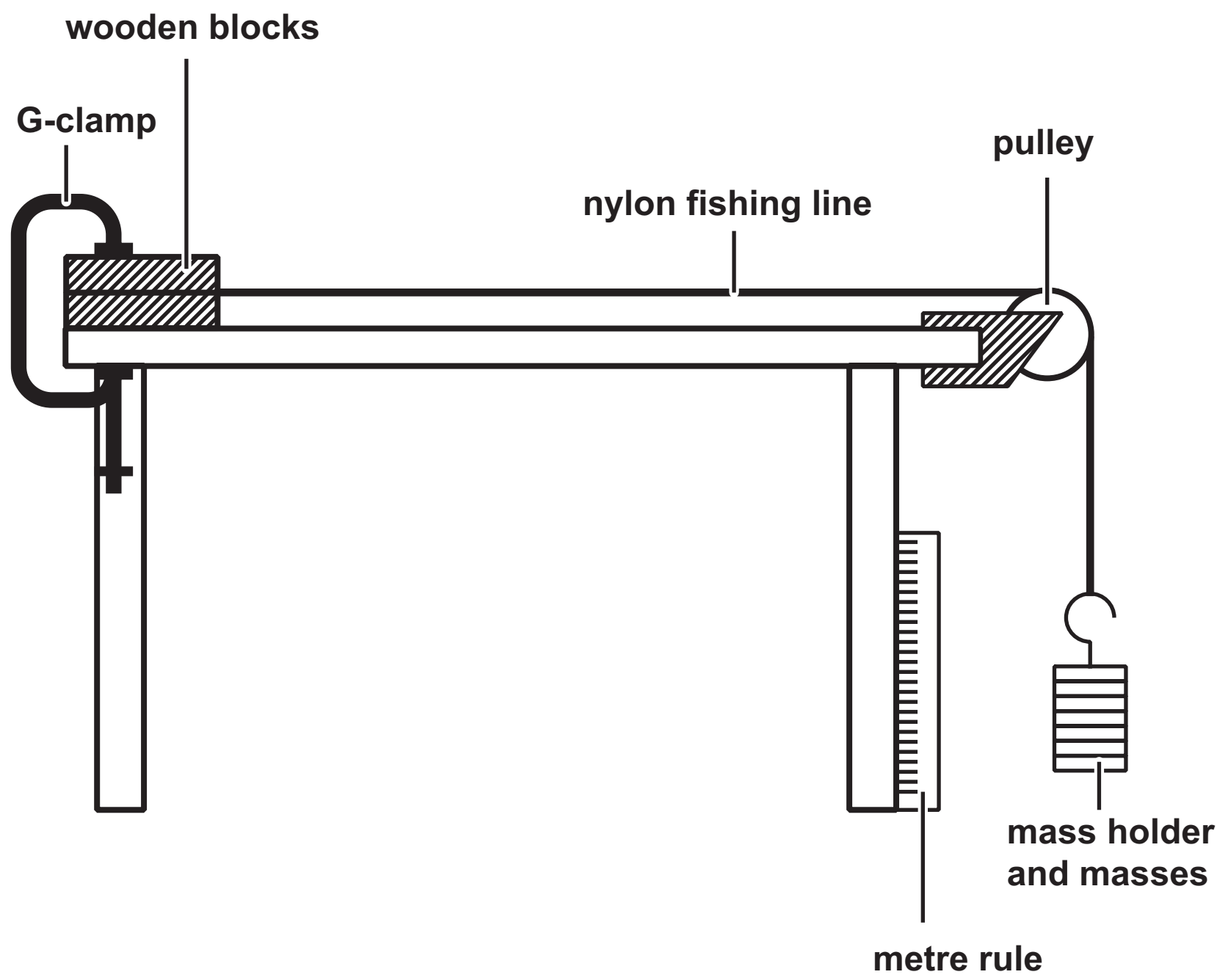
Page

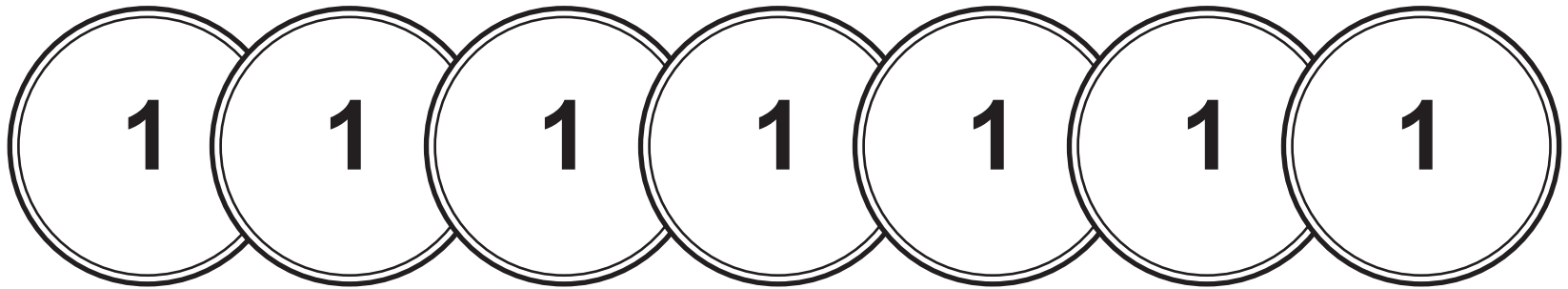
3	Question 1
4	Question 2
5	Question 3
6	Question 5
7	Question 6
8	Question 6(b)
9	Question 6(c)
10	Question 7(a)
11	Question 7(c)
12	Question 8
13	Question 9 – circuit diagram
14	Question 9
15	Question 10
16	Question 10(a)
17	Question 11
18	Question 11(b)
19	Question 11(c)(ii)
20	Question 12(a)
21	Question 12(a)(i)

Spare Copies

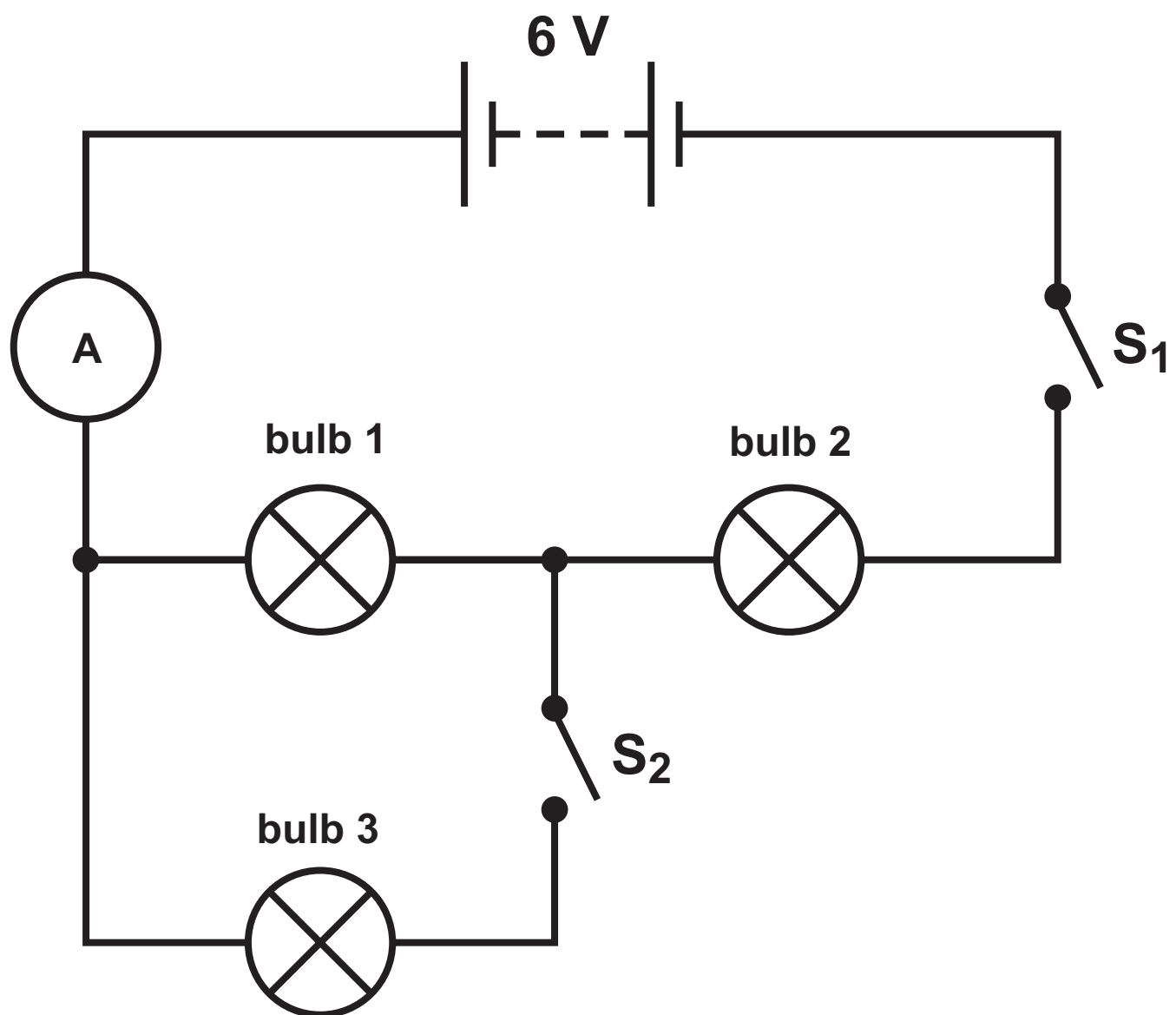
22	Question 7(a)
23	Question 11(c)(ii)

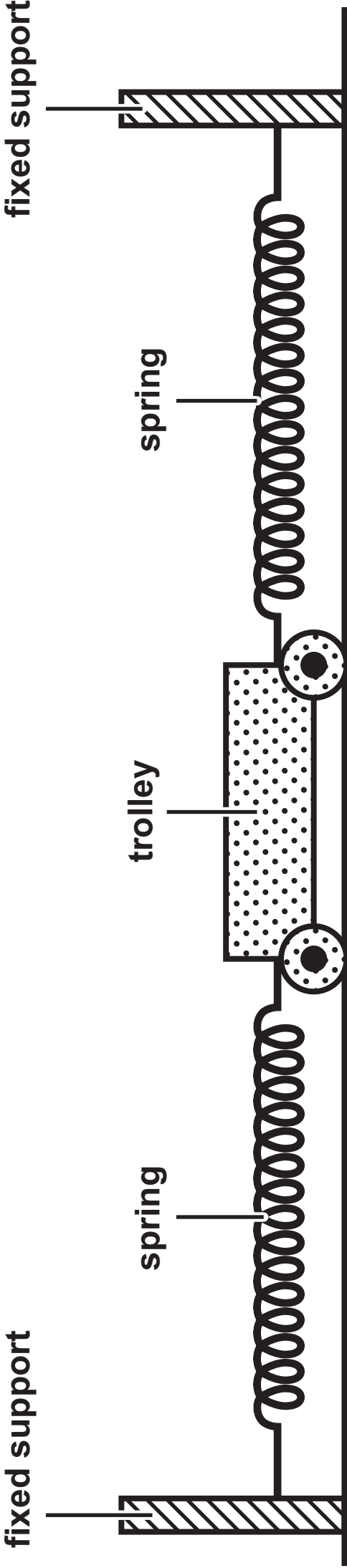
Question 1



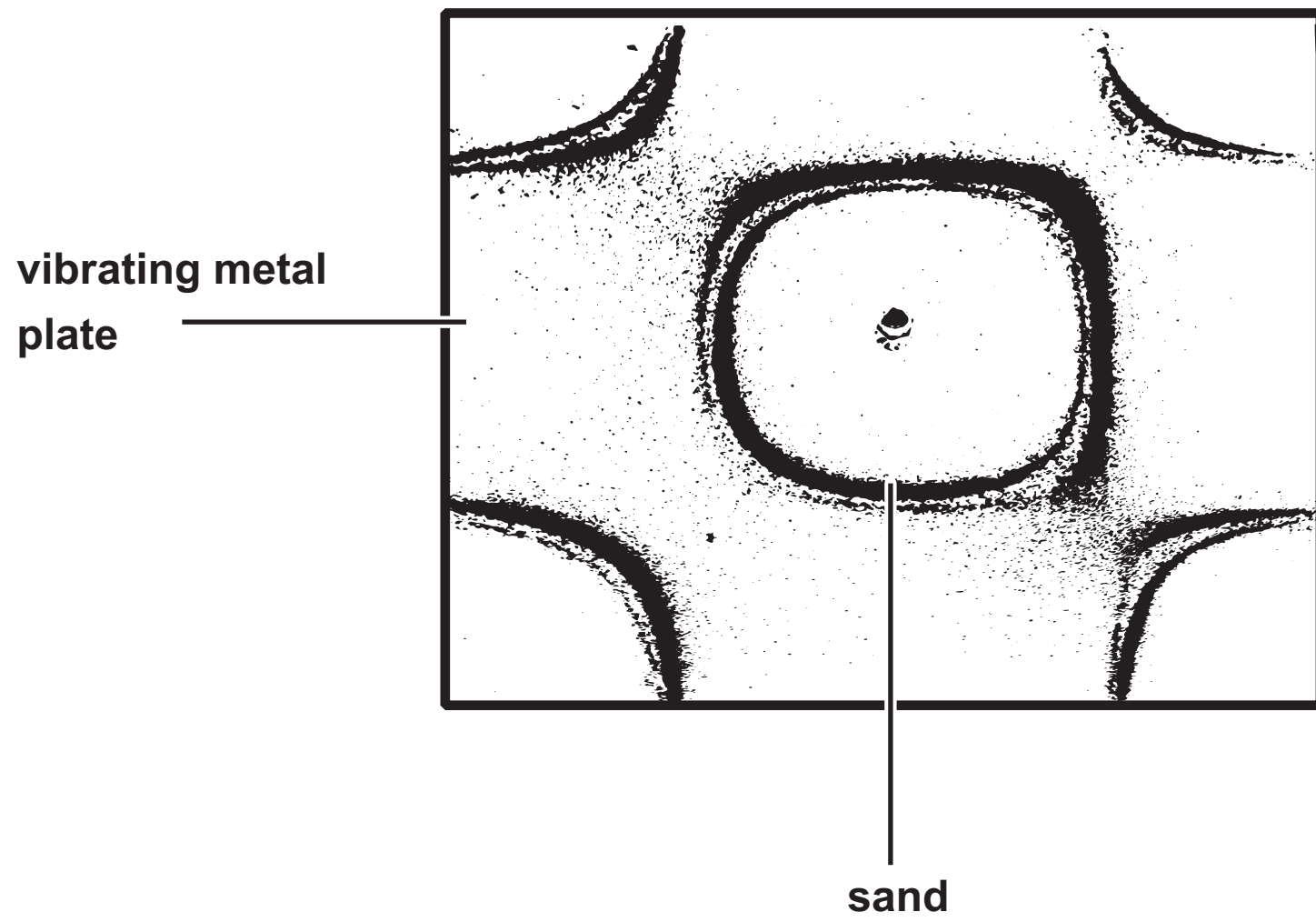
Question 2

Question 3

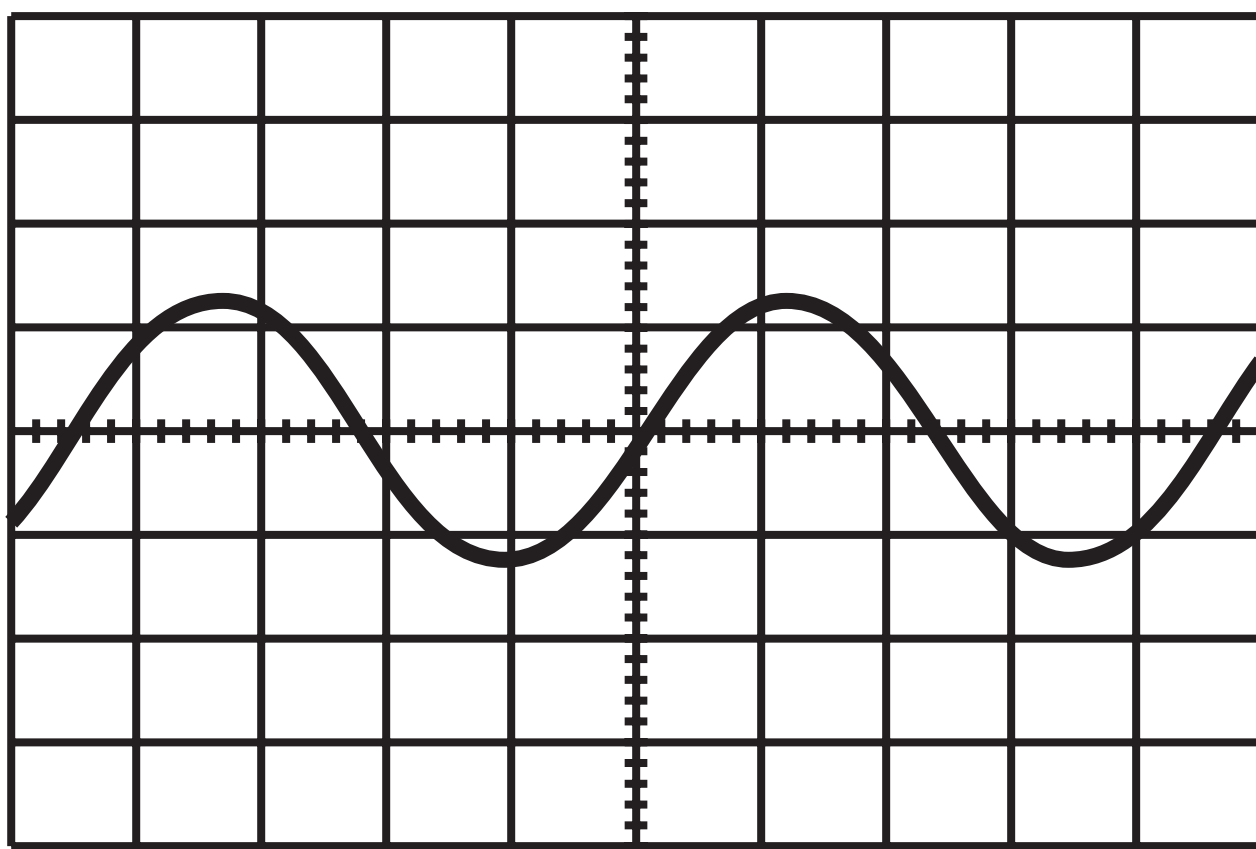




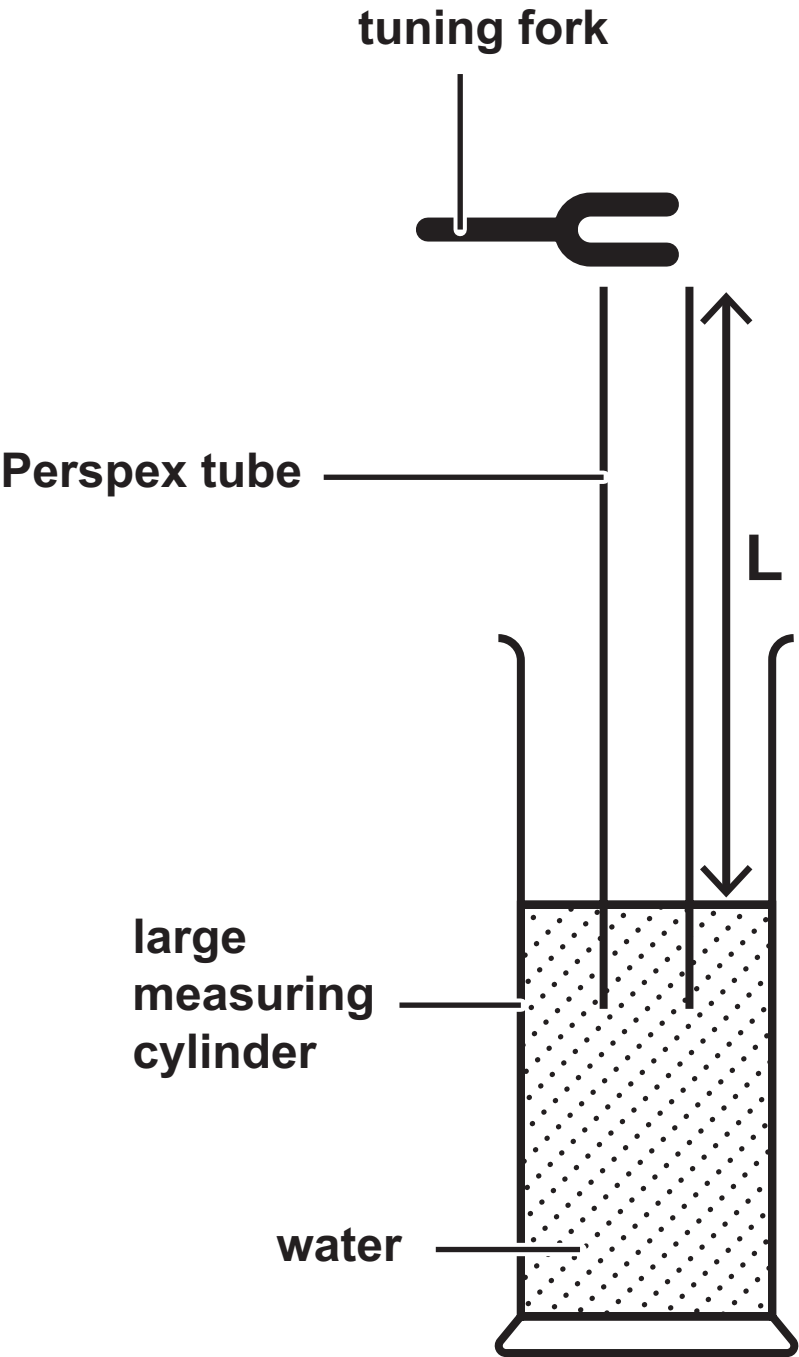
Question 6



Question 6(b)



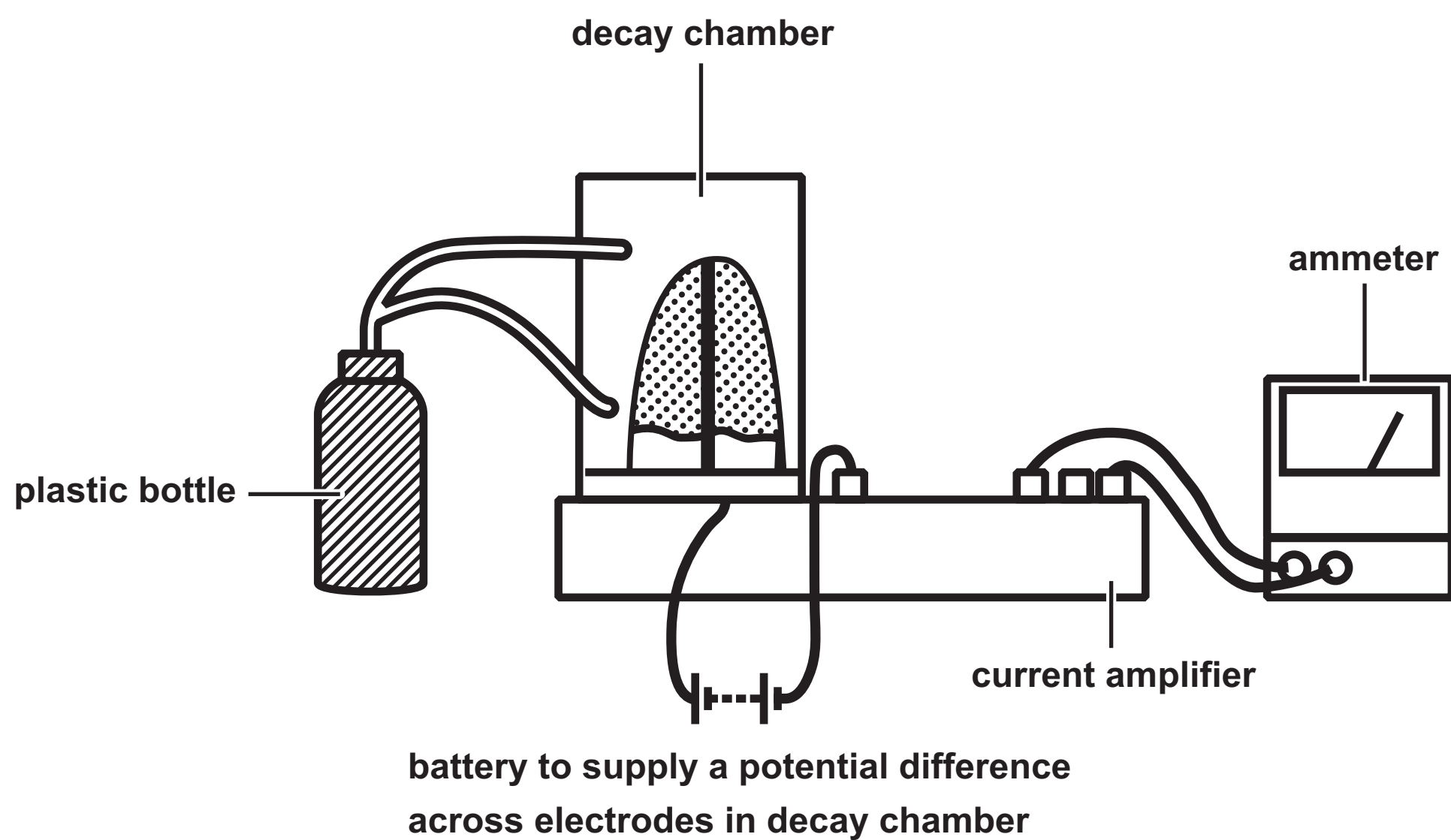
Question 6(c)



Question 7(a)



Question 7(c)



Question 8

FIGURE 1

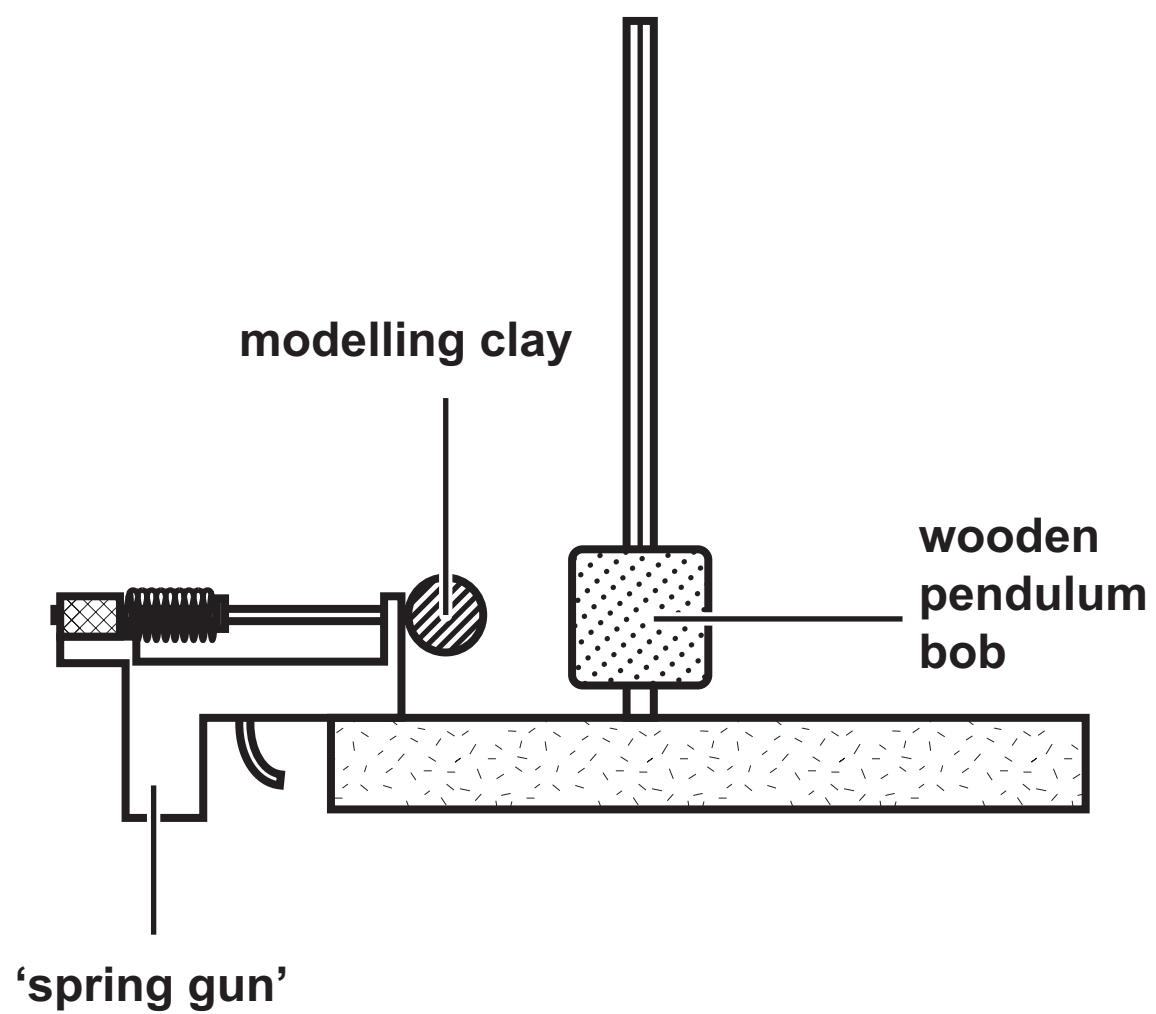
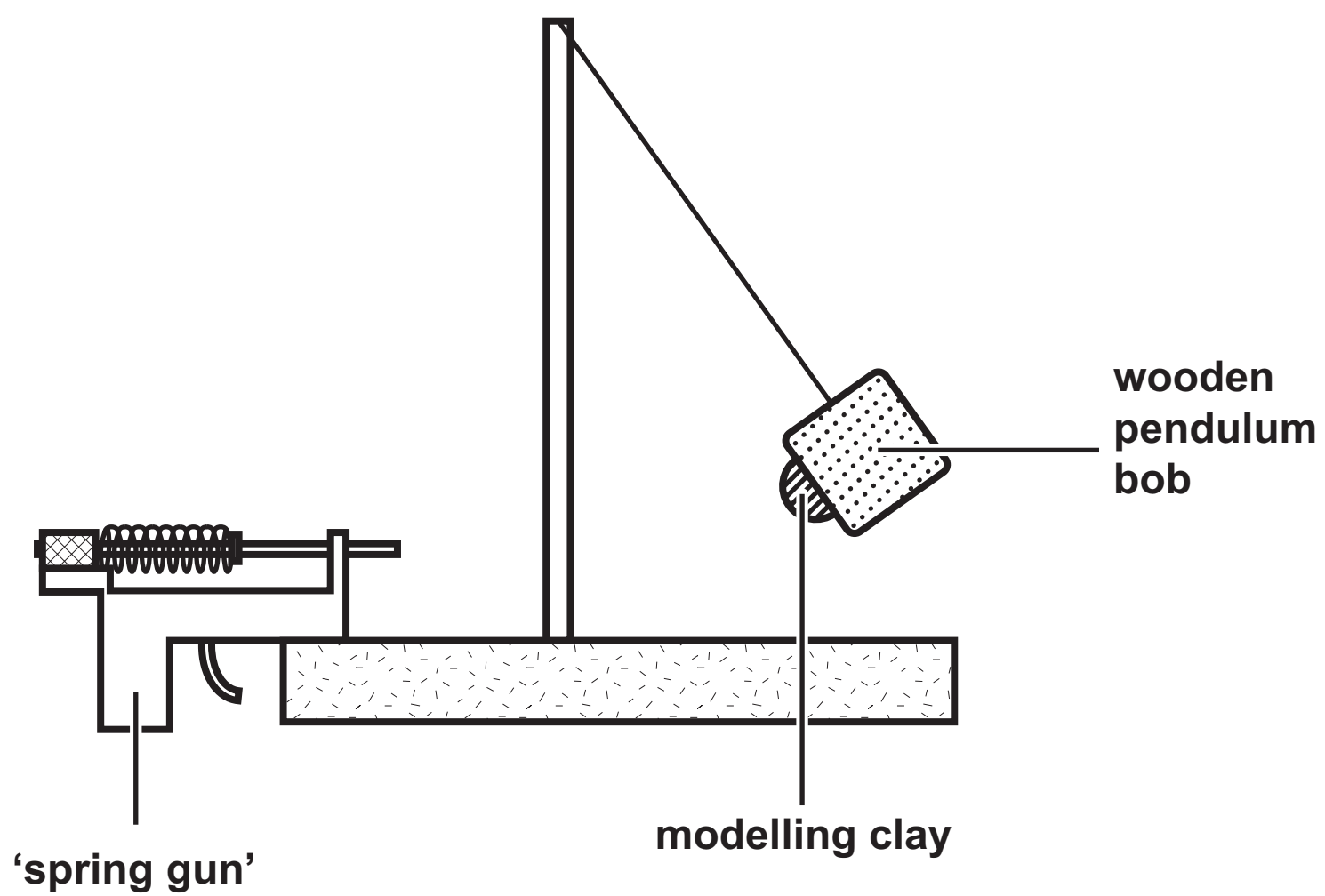
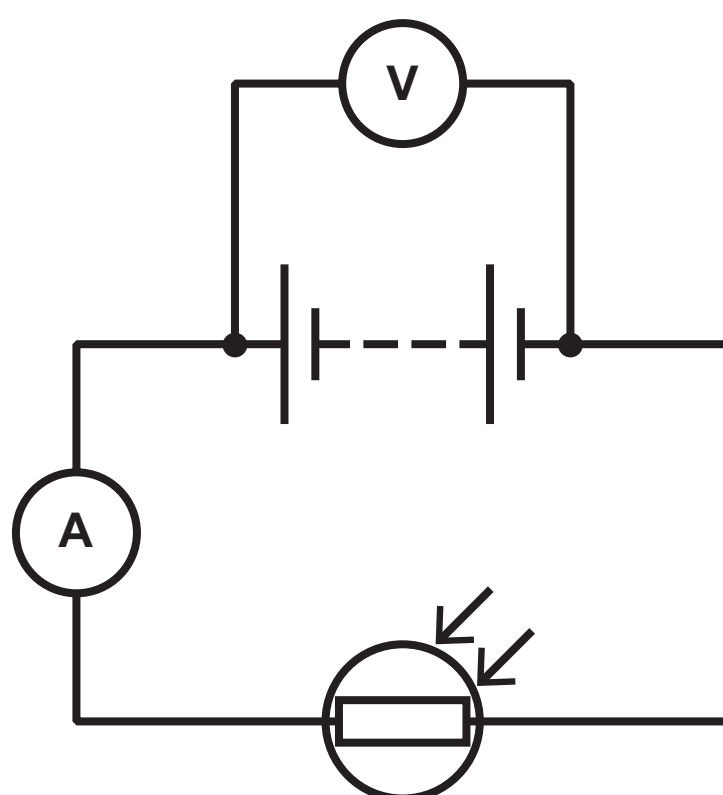


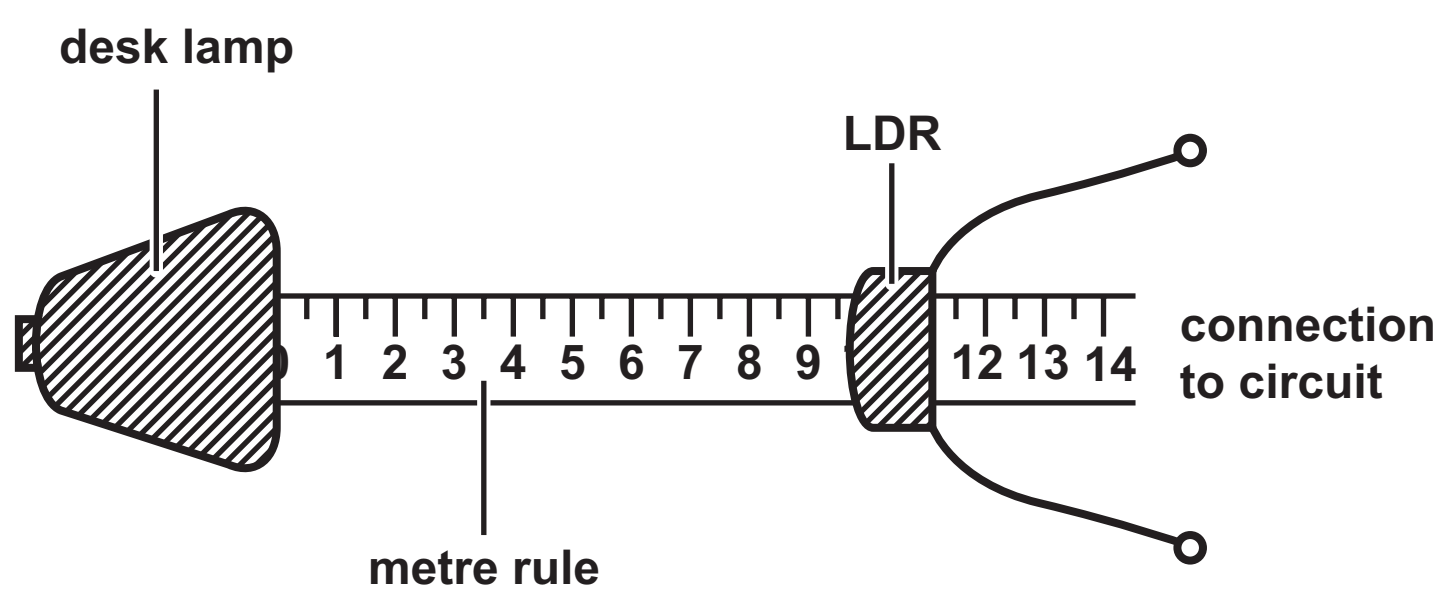
FIGURE 2



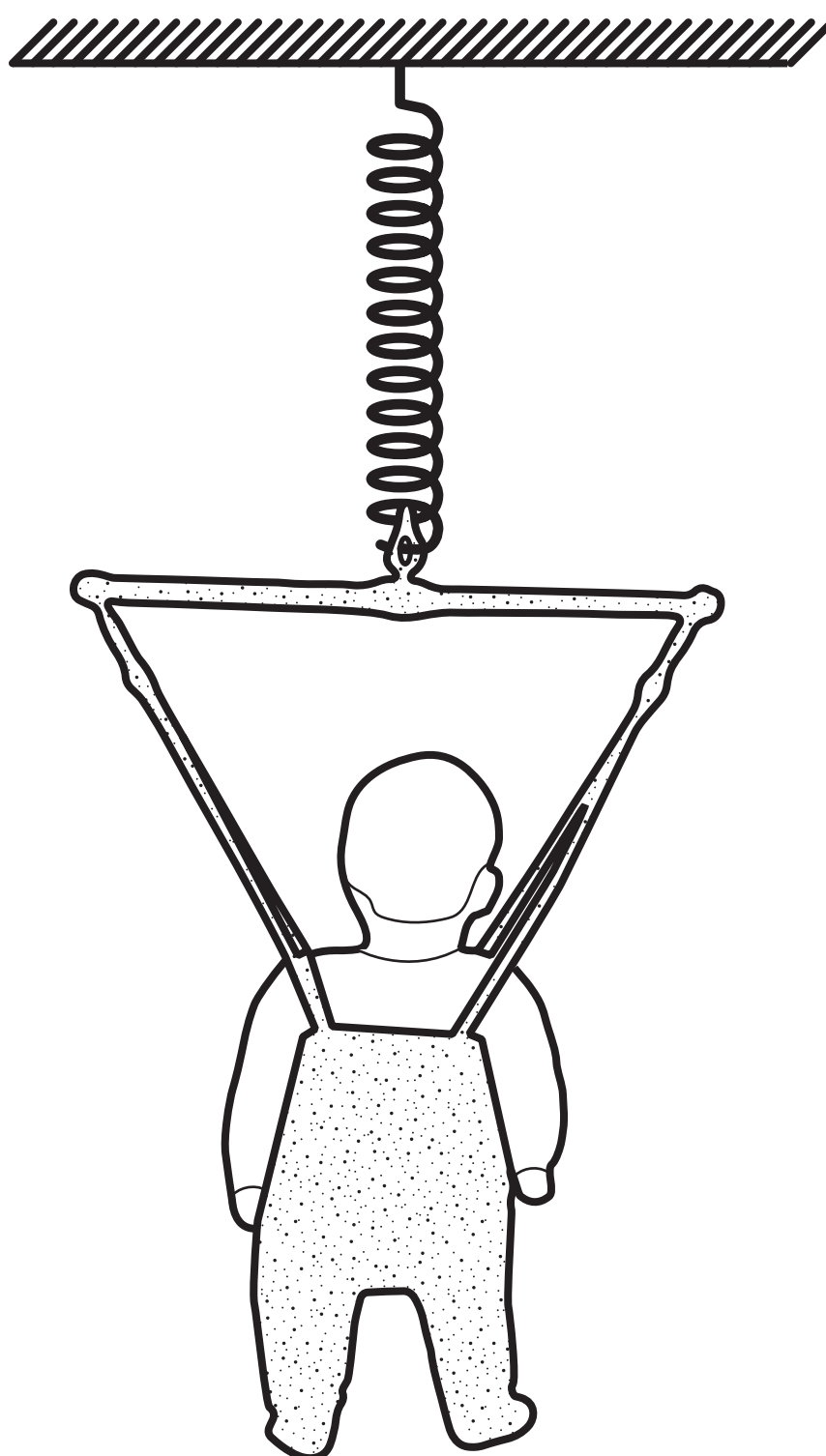
Question 9 – circuit diagram



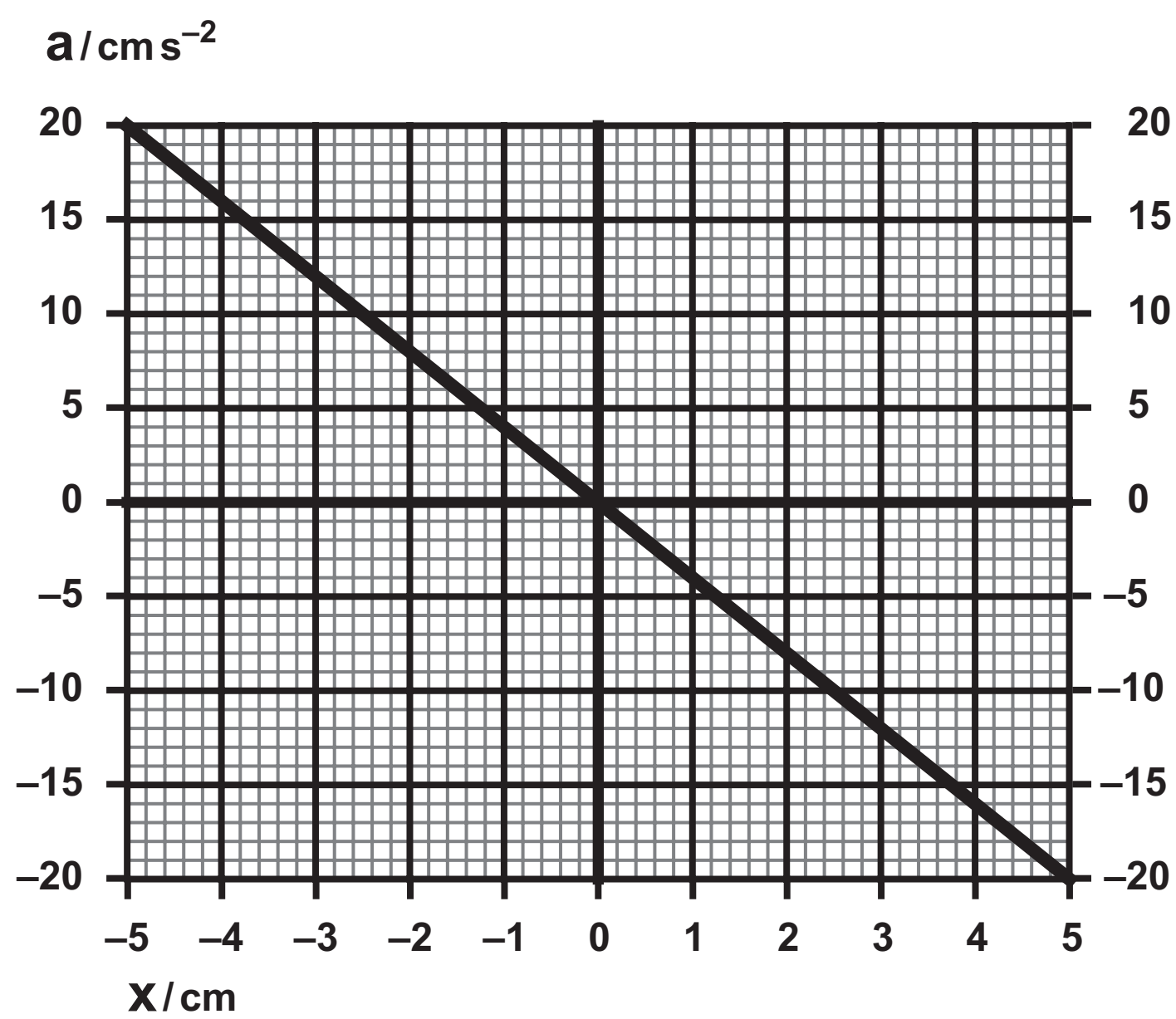
Question 9



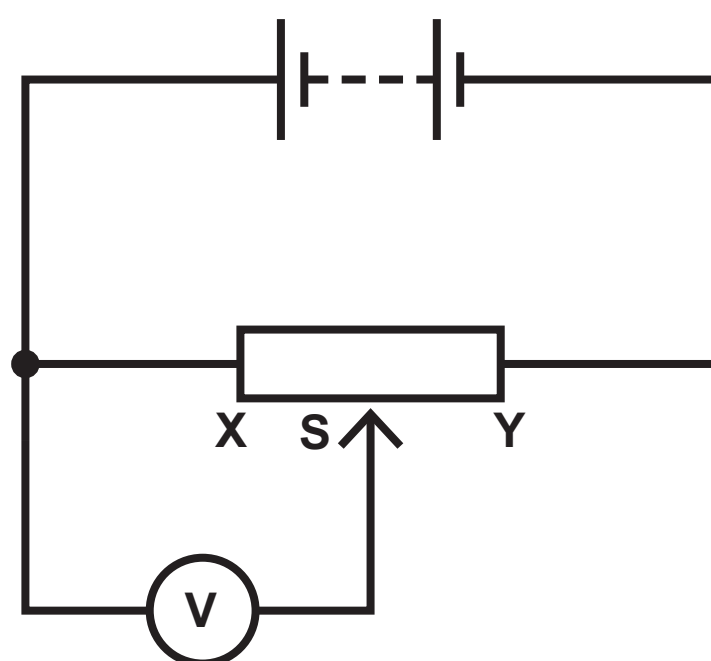
Question 10



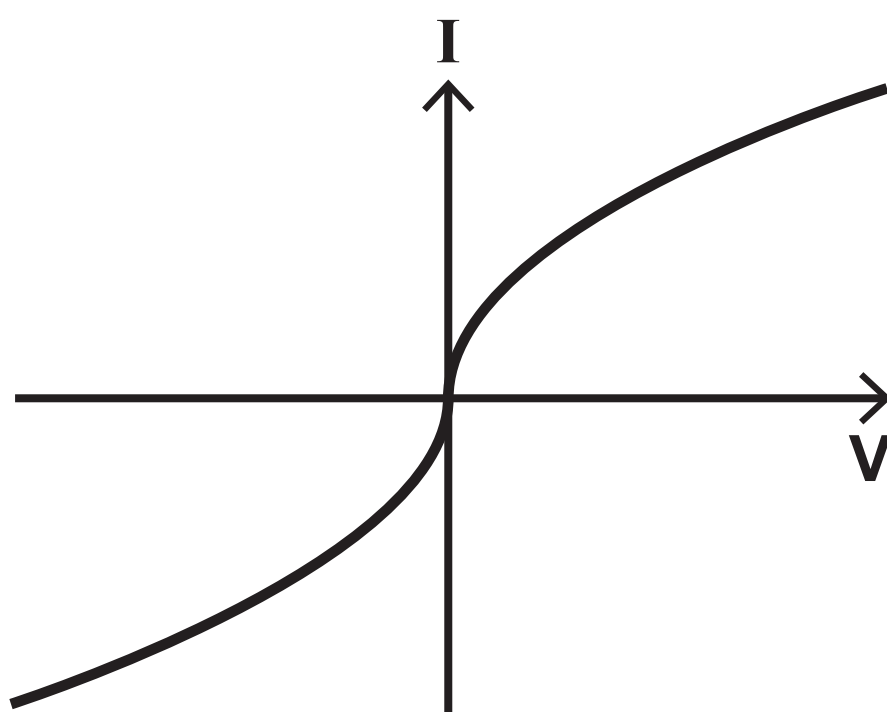
Question 10(a)



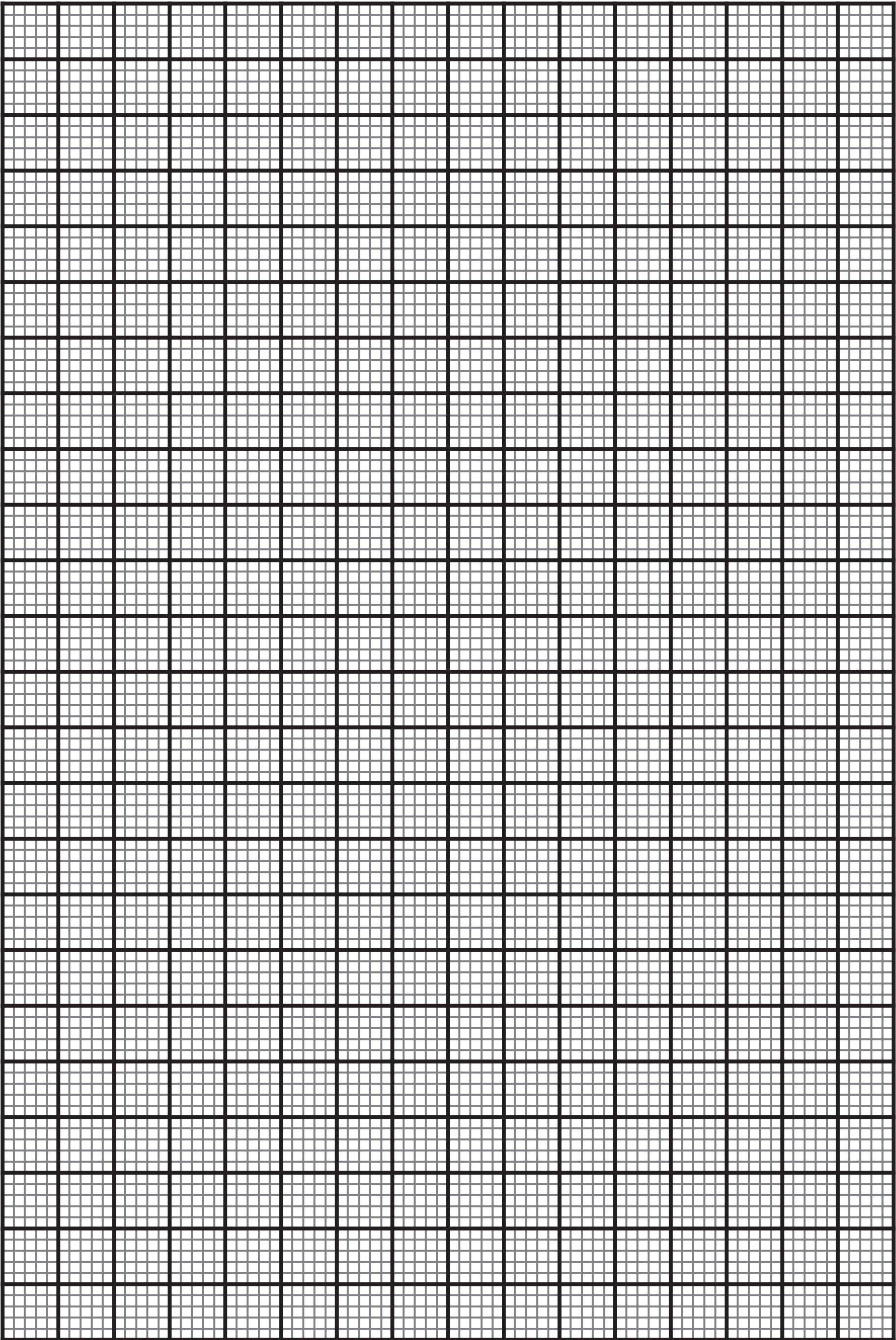
Question 11



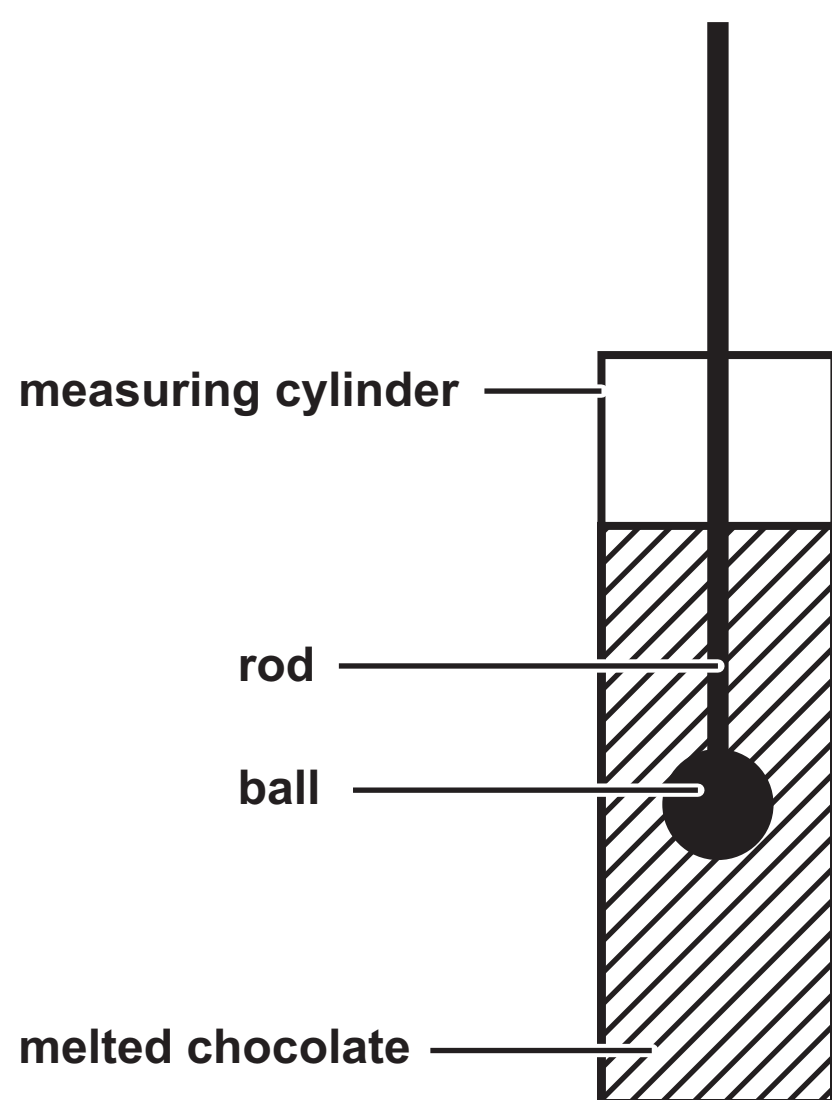
Question 11(b)



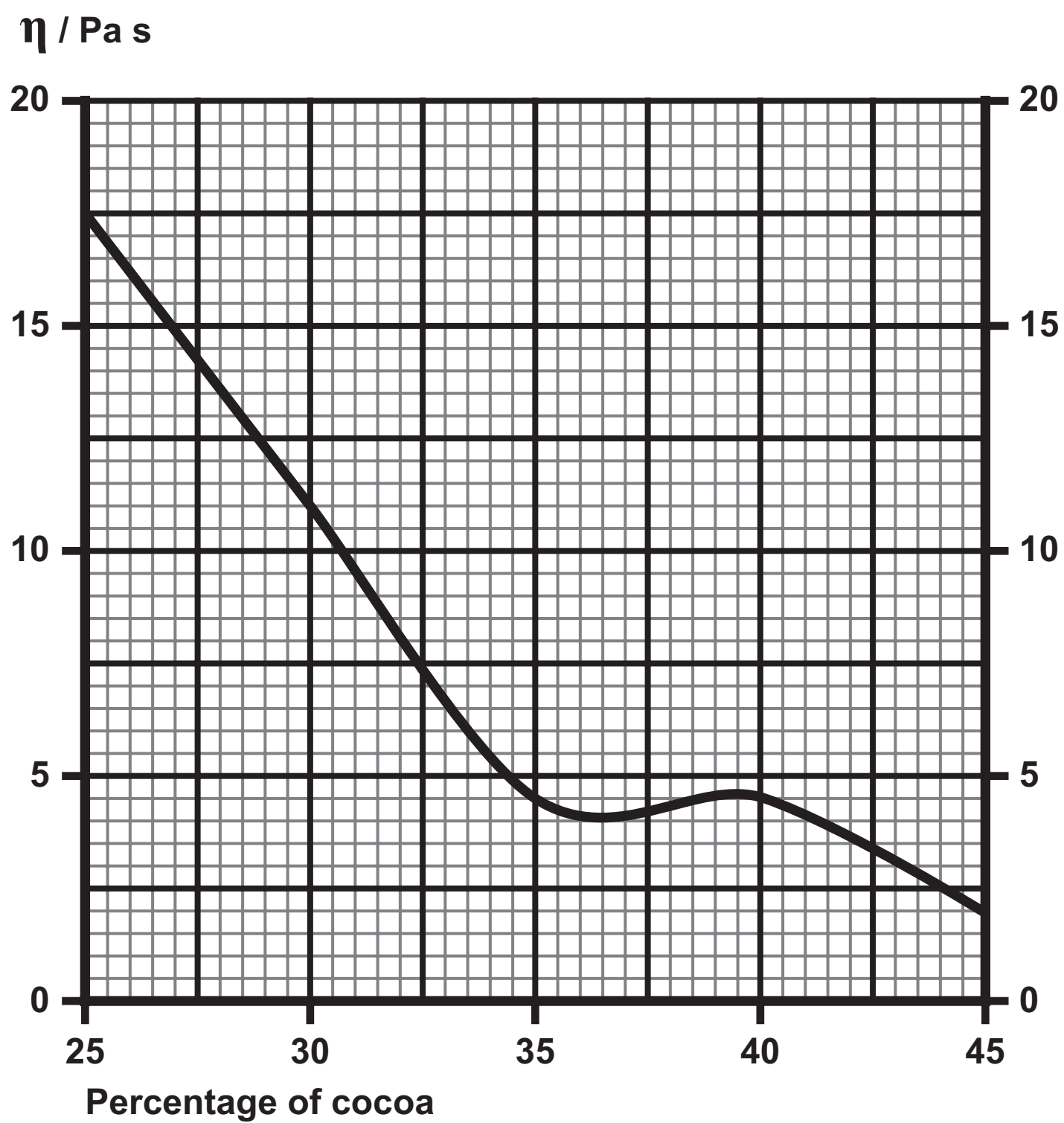
Question 11(c)(ii)



Question 12(a)



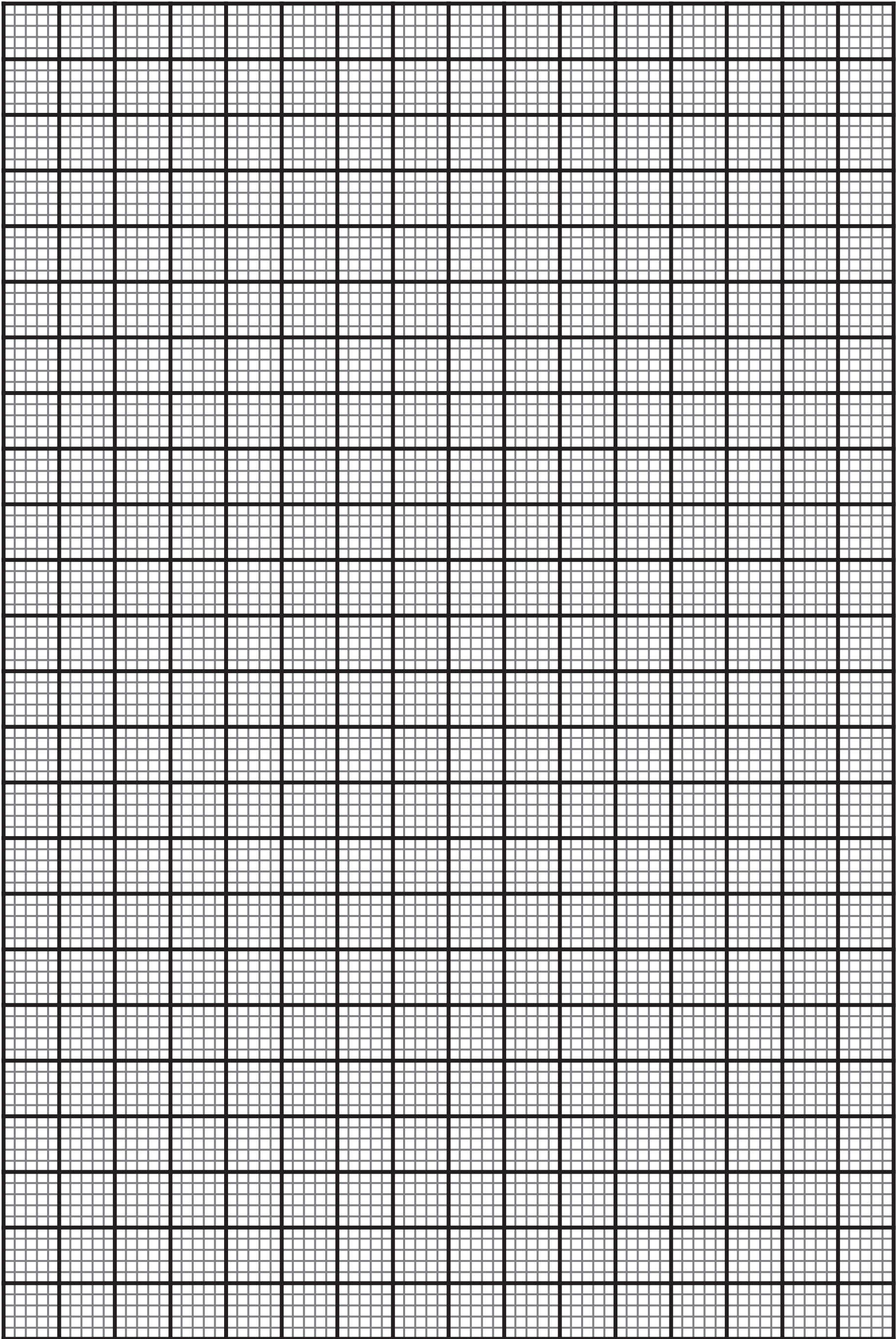
Question 12(a)(i)



Question 7(a)



Question 11(c)(ii)



Source information

Question 2

Source adapted from: © Bjoern Wylezich/Shutterstock

Question 6

Source adapted from: <https://skullsinthestars.com/2013/05/02/physics-demonstrations-chladni-patterns/#jp-carousel-7353>